

# INSTALLATION INSTRUCTIONS

## DRAG SPECIALTIES SPOT LIGHT BAR P/N 2001-0371

**ATTENTION INSTALLER:** (if other than owner): Please forward this Instruction Sheet to the purchaser of this product. These instructions contain valuable information necessary to the end user.

**INTRODUCTION:** These instructions describe the procedure for properly installing this spot light bar on the 2000 & later FLST models.

Review instructions carefully before beginning, as they contain important information. Please retain for future reference.

Particularly important information is distinguished in these instructions by the following notations.

**NOTE:** A NOTE provides key information to make procedures easier or clearer.

**CAUTION:** A CAUTION indicates special procedures that must be followed to avoid damage to the motorcycle and/or accessories.

**WARNING!:** A WARNING indicates special procedures that must be followed to avoid injury to a motorcycle operator or person inspecting or repairing the motorcycle.

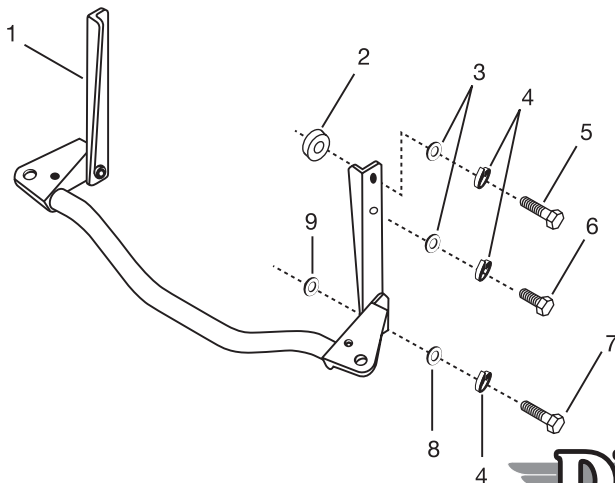


### PROCEDURE:

- Remove the two trim strips (one on each side of the fork tins) by removing the four button-head screws and set aside. They will not be re-used.
- Take  $\frac{5}{16}$ "-24x1- $\frac{1}{4}$ " hex bolt (item 7) and install  $\frac{5}{16}$ " lock washer (item 4) and  $\frac{5}{16}$ " flat washer (item 8) onto the  $\frac{5}{16}$ " hex bolt.
- While holding the light bar in place, slide the  $\frac{5}{16}$ " spacer washer (item 9) between the fork and the lower mounting hole on the light bar. Insert the  $\frac{5}{16}$ " hex bolt with washers and tighten only finger tight.
- Take the  $\frac{5}{16}$ "-24x1- $\frac{3}{8}$ " hex bolt (item 5) and install a  $\frac{5}{16}$ " lock washer (item 4) and the larger  $\frac{5}{16}$ " flat washer (item 3) on the hex bolt.
- Hold the  $\frac{5}{16}$ " spacer (item 2) between the upper light bar mount and the fork and install the  $\frac{5}{16}$ " hex bolt with washers. Tighten finger tight.
- Repeat steps 2 through 5 for the other side of the light bar.
- Tighten all bolts securely to 10-12 ft-lbs.
- $\frac{5}{16}$ "-24x1 bolts (item 6) and washers are used to secure the windshield to the light bar. If the windshield is not used, or a quick-detachable windshield is used, these bolts are not required.
- Install spot lamps (not included) onto the two mounting locations according to the lamp manufacturer's instructions.

### WARNING!:

Before operating motorcycle, be sure all hardware is tight.



### KIT COMPONENTS

ITEM #	DESCRIPTION	QUANTITY
1	Light bar	1
2	$\frac{5}{16}$ "x $\frac{3}{4}$ " Upper Spacer	2
3	$\frac{5}{16}$ "x1- $\frac{1}{32}$ "x $\frac{1}{8}$ " Flat Washer	4
4	$\frac{5}{16}$ " Lock Washer	6
5	$\frac{5}{16}$ "-24x1- $\frac{3}{8}$ " Hex Bolt	2
6	$\frac{5}{16}$ "-24x1 Hex Bolt	2
7	$\frac{5}{16}$ "-24x1- $\frac{1}{4}$ " Hex Bolt	2
8	$\frac{5}{16}$ "x $\frac{1}{16}$ "x $\frac{1}{8}$ " Flat Washer	2
9	$\frac{5}{16}$ "x $\frac{1}{2}$ "x $\frac{5}{16}$ " Lower Spacer	2

**DRAG**  
Specialties